

**Hinesburg Official Map
Sheet 1 of 2
DRAFT REVISIONS**



1 inch = 775 feet
(at 11"x17" map size)
0 300 600 Feet

map date 6/12/2019
by Hinesburg Planning & Zoning

**DRAFT 9
PC Proposal - 6/12/19
Sheet 1 of 2**

See Community Facility Description Document for details on the numbered future community facilities.

Locations for future improvements approximate only. Implementation or acceptance of specific elements is at the discretion of the Select Board.

New roads shown with 200' wide buffer; improvements to existing roads shown with 100' wide buffer. Roads will not occupy entire buffer shown. Buffer intended to allow for traffic calming and width adjustment on existing roads, and for non-linear road layout for slower speeds on new roads.

See Sheet 2 for the Richmond Road corridor

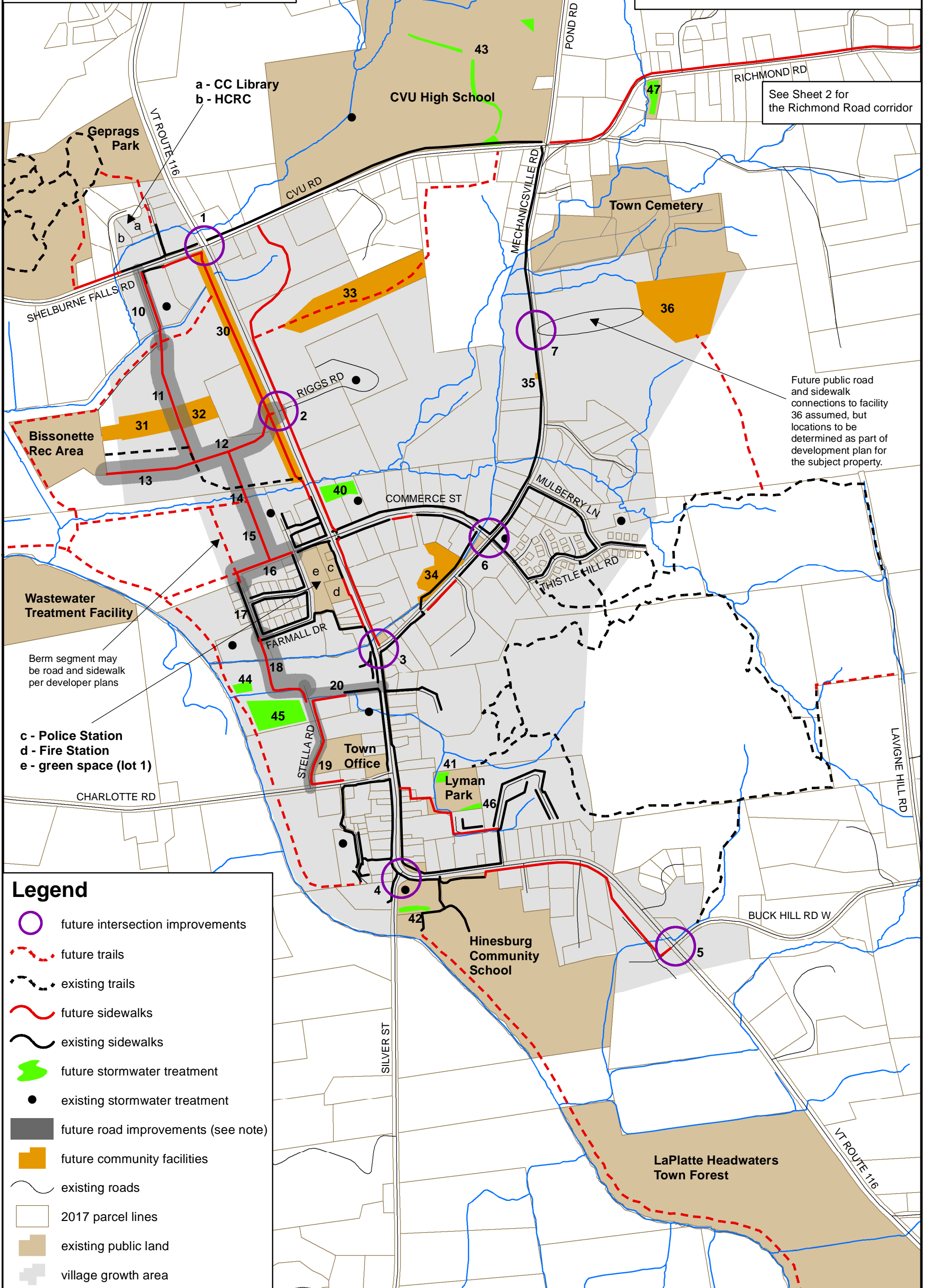
Future public road and sidewalk connections to facility 36 assumed, but locations to be determined as part of development plan for the subject property.

Berm segment may be road and sidewalk per developer plans

c - Police Station
d - Fire Station
e - green space (lot 1)

Legend

- future intersection improvements
- future trails
- existing trails
- future sidewalks
- existing sidewalks
- future stormwater treatment
- existing stormwater treatment
- future road improvements (see note)
- future community facilities
- existing roads
- 2017 parcel lines
- existing public land
- village growth area

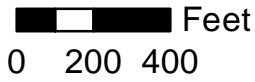


**Hinesburg Official Map
Sheet 2 of 2
DRAFT REVISIONS**

See Sheet 1 for the
Village Growth Area

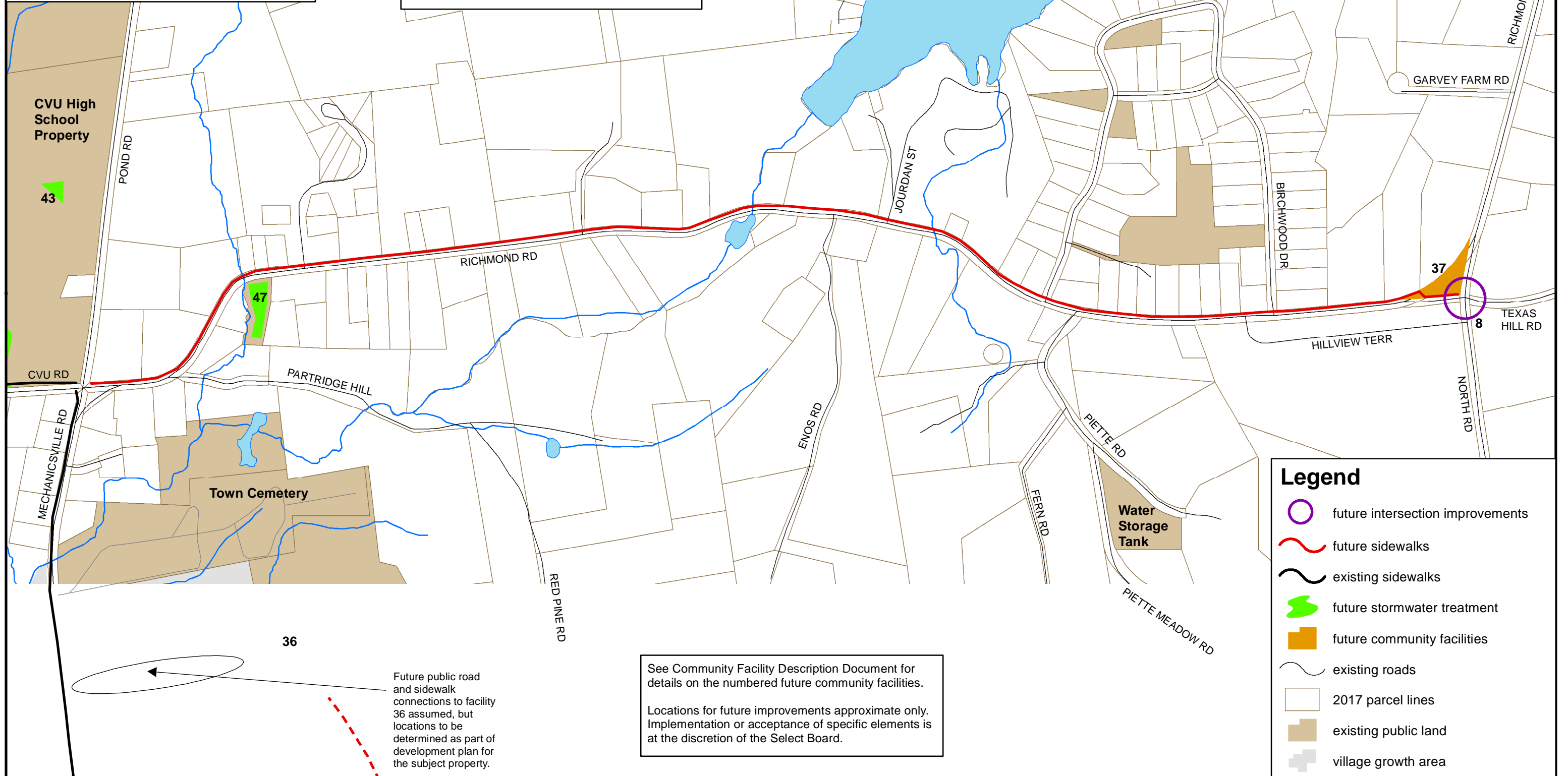


1 inch = 500 feet
(at 11"x17" map size)



map date 6/12/2019
by Hinesburg Planning & Zoning

**DRAFT 9
PC Proposal - 6/12/19
Sheet 2 of 2**



Legend

- future intersection improvements
- future sidewalks
- existing sidewalks
- future stormwater treatment
- future community facilities
- existing roads
- 2017 parcel lines
- existing public land
- village growth area

See Community Facility Description Document for details on the numbered future community facilities.

Locations for future improvements approximate only. Implementation or acceptance of specific elements is at the discretion of the Select Board.