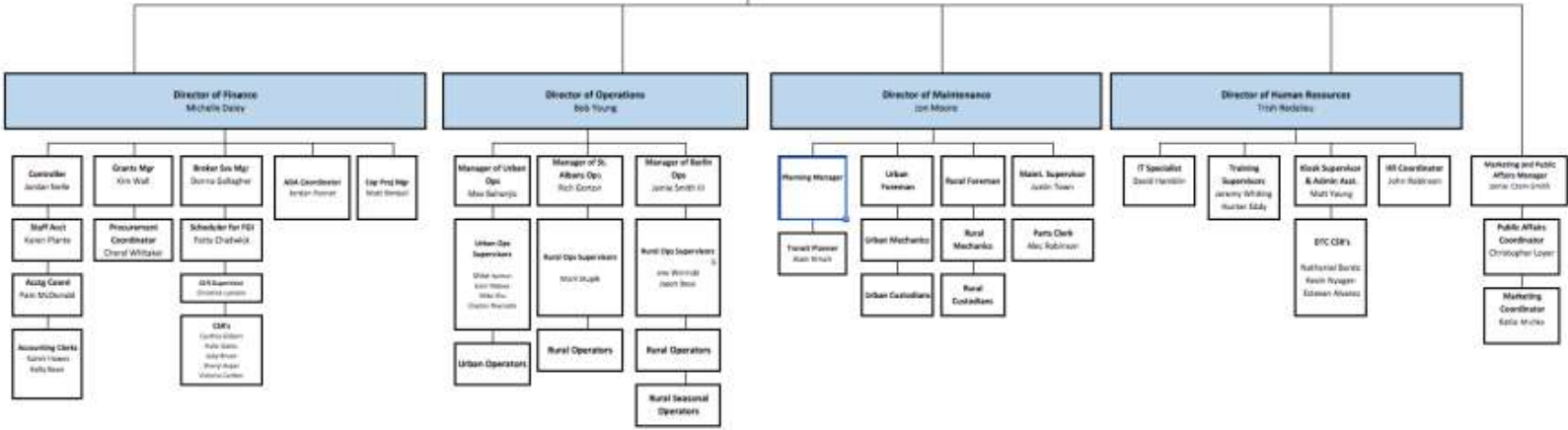




# About GMT

- ▶ The Chittenden County Transportation Authority (CCTA) was chartered in 1973 by the Vermont General Assembly after the private bus operator went out of business.
- ▶ In 2011, Chittenden County Transportation Authority (CCTA) and the Green Mountain Transit Agency (GMTA) became a single unified organization, making CCTA the first and only regional transit authority in the State of Vermont. In 2016, the agency became Green Mountain Transit (GMT).
- ▶ GMT serves the communities of Burlington, Essex, South Burlington, Shelburne, Williston, Winooski, Milton, Hinesburg, a portion of Colchester, and the following counties: Washington, Lamoille, Franklin, and Grand Isle. GMT is considered a municipality and is the first and only transit authority in the State of Vermont.

Executive Leadership Team



# Community Partnerships

- ▶ In 2017, GMT participated in three events to benefit our local service area.
  - ▶ Chittenden County: Canal Street Veteran's Housing (COTS program)
  - ▶ Washington County: Washington County Family Center (Diaper drive)
  - ▶ Franklin County: Franklin County Community Action (Winter Clothing Drive)

# Organizational Highlights

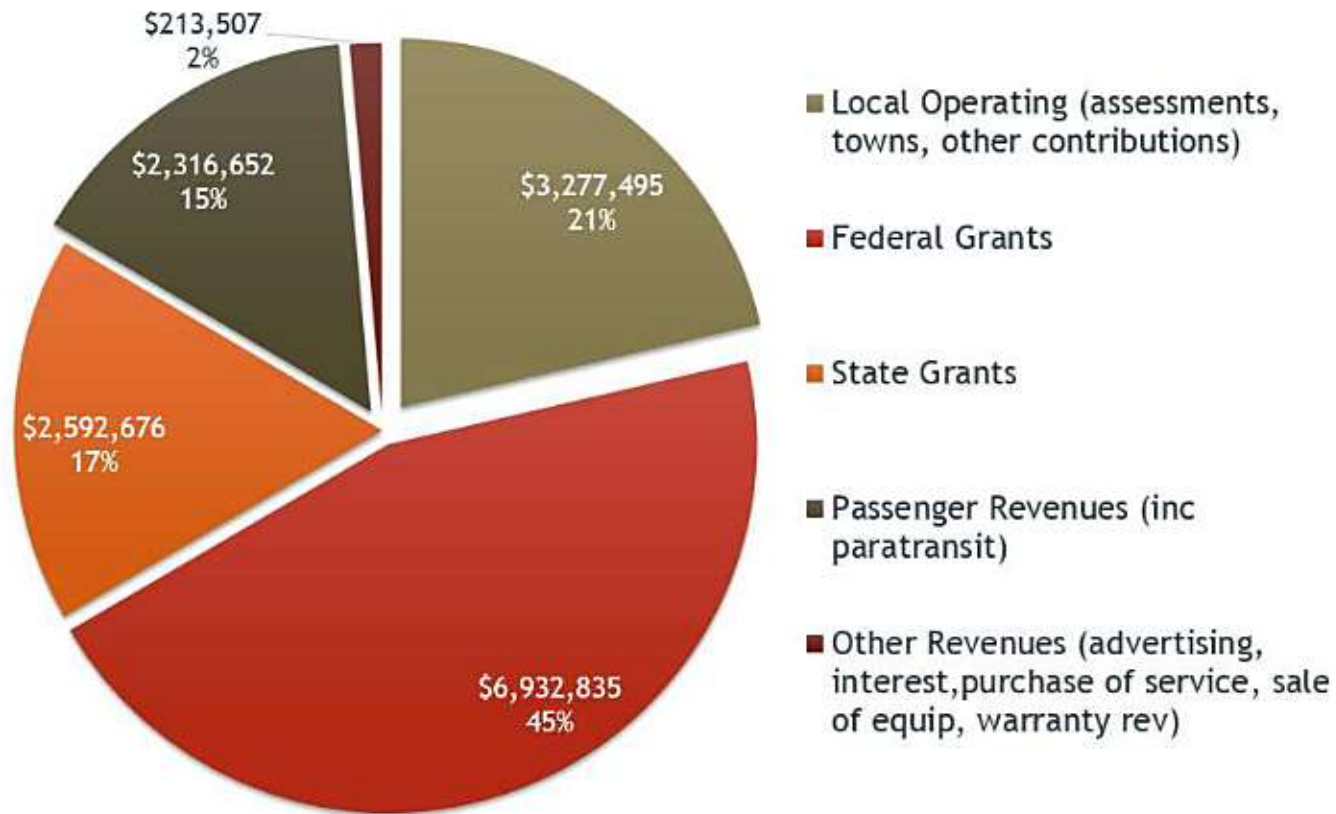
- ▶ Staff Volunteer Program
- ▶ Bloomfire (internal intranet)
- ▶ Quarterly Staff Meetings

# Funding Streams

- ❑ Federal Grants
- ❑ State Grants
- ❑ Local Contributions
- ❑ Passenger Revenue
- ❑ Advertising Revenue
- ❑ Other Revenues

# Urban Revenue Types

*based on FY17*



## Federal Grants

- Most of GMT's federal grant funding comes from three (3) sources
  - The Federal Transit Administration (FTA)
  - The Vermont Agency of Transportation (VTrans)
  - The Chittenden County Regional Planning Commission (CCRPC)

# Local Contributions

A Member Community is a community that has a voting representative from their town/city on the board and the town/city is assessed a tax for service.

A Non-Member Community does not have a voting representative from their community on the board. GMT cannot assess these municipalities for services.





# Paratransit Transportation Services

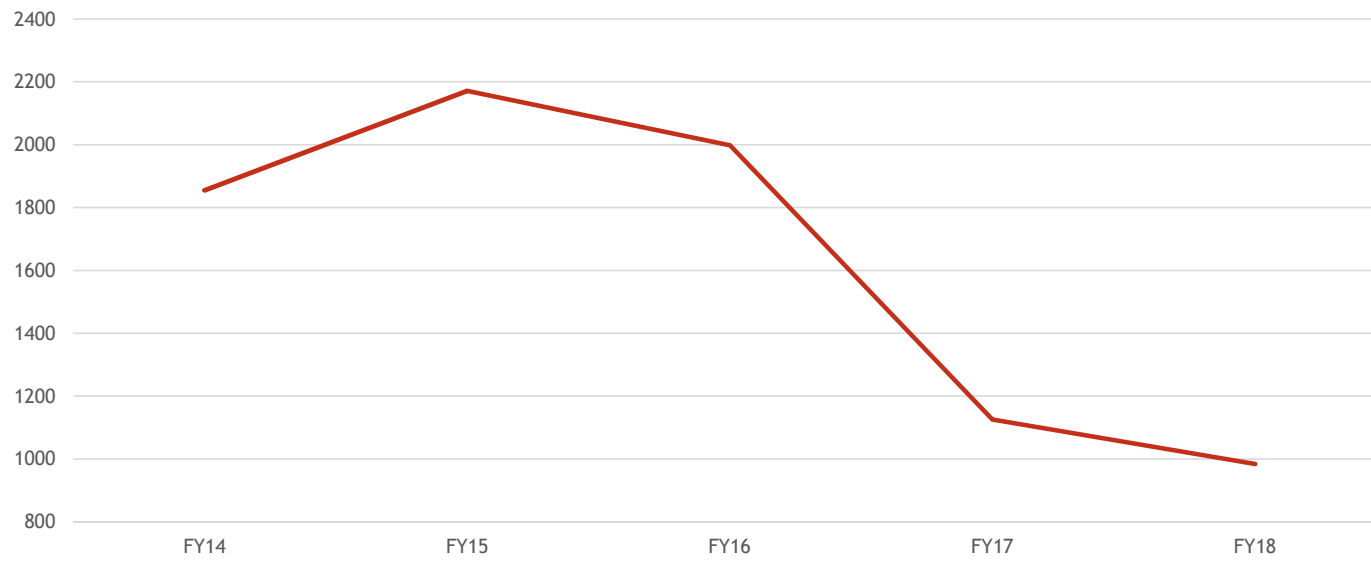
- ▶ ADA paratransit services are mandated by the code of federal regulations 49 CFR Part 37
- ▶ The mandate require us to provide complementary paratransit service to origins and destinations with  $\frac{3}{4}$  mile of our fixed routes.
- ▶ Requirements for complementary paratransit do not apply to commuter routes.
- ▶ This can be done by the agency or contracted with another agency.

# Elders & Disabled Program (grant)

- ✿ These are 5310 Federal Funds applied at 80% (Enhanced Mobility of Seniors & Individuals with Disabilities)
- ✿ Local partners agree to provide the 20% match requirement
  - ✿ Care Partners, Age Well and CIDER in FGI
  - ✿ Barre Project Independence and Central VT Council on Aging in Washington Cty
  - ✿ SSTA provides this service for Chittenden Cty and receives the local match from the communities and agencies directly
- 🕒 The program aims to improve mobility for seniors and individuals with disabilities.

# Williston

Williston ADA Ridership



- ▶ The drop accounts for participants who have either moved or stopped using the system.

Questions?

