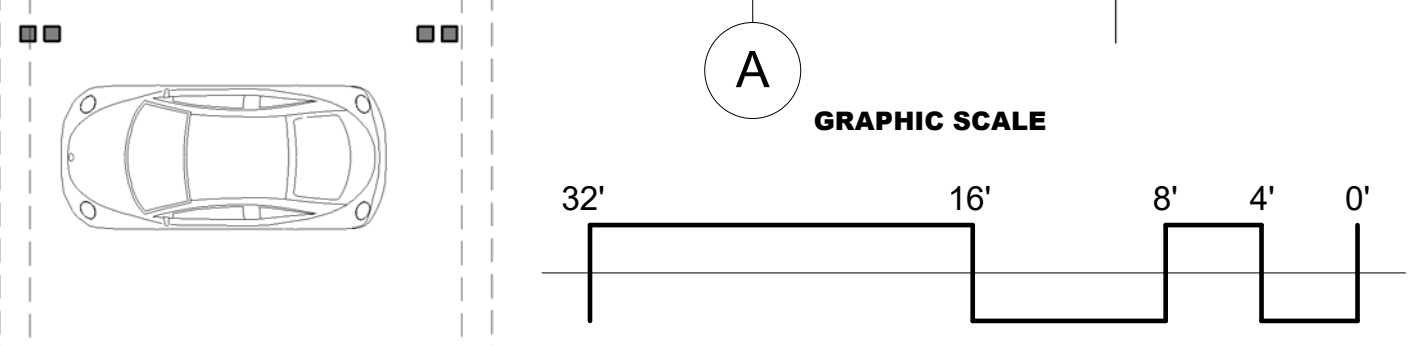


Z:\2017\14\Revit\Layout-21.rvt

11/30/2017 4:28:00 PM



DP 18-05  
 RECEIVED  
 Dec 04, 2017  
 PLANNING/ZONING



review issue: DECEMBER 1, 2017

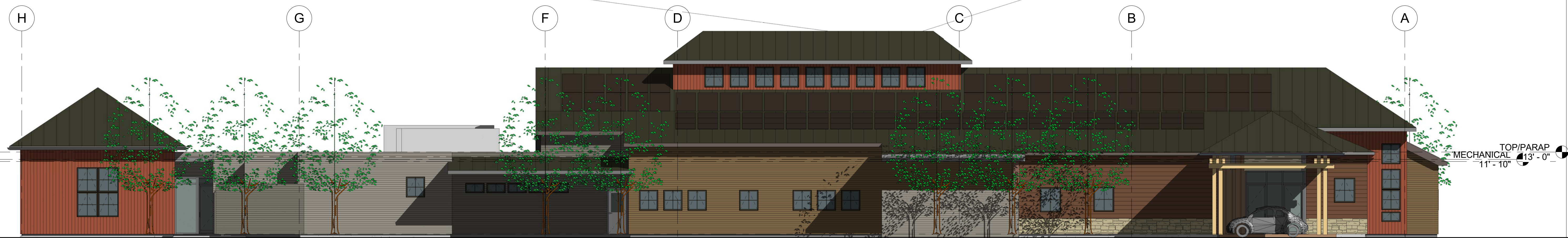
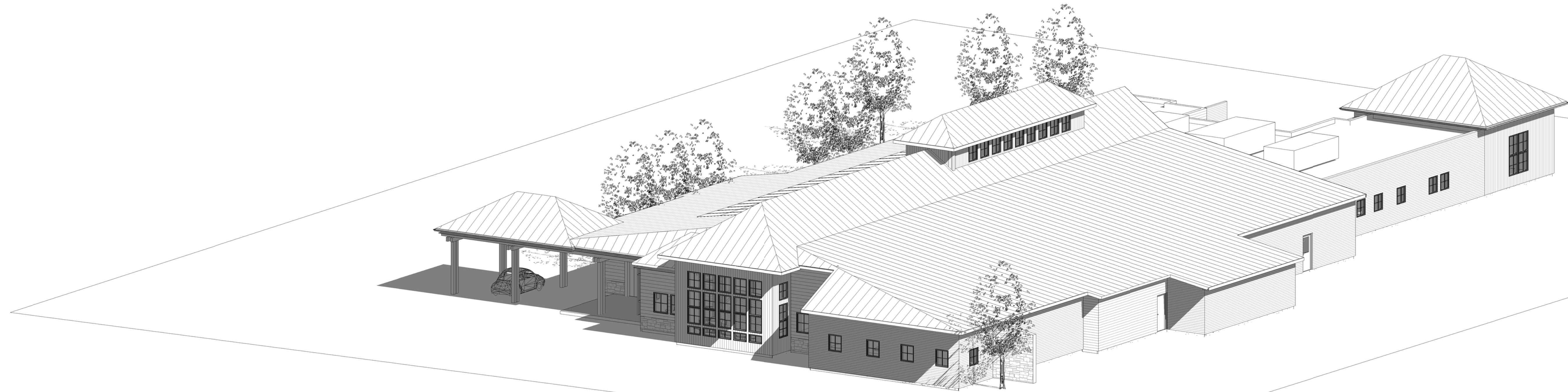
**BRAD RABINOWITZ ARCHITECT**  
 200 MAIN STREET BURLINGTON, VERMONT 05401  
 802 658 0430 T 802 863 6876 F  
 www.bradrabinowitzarchitect.com

Design: **BEVS** EMERGENCY & SPECIALTY HOSPITAL  
 MARSHALL AVENUE WILLISTON, VERMONT

DRAWING TITLE:  
**PLAN - FIRST FLOOR OVERALL**  
 THIS PLAN FOR OVERALL LAYOUT  
 SEE SHEETS A1.2 & A1.3 FOR DETAIL PLANS, DIMENSIONS, WINDOW AND DOOR KEYS

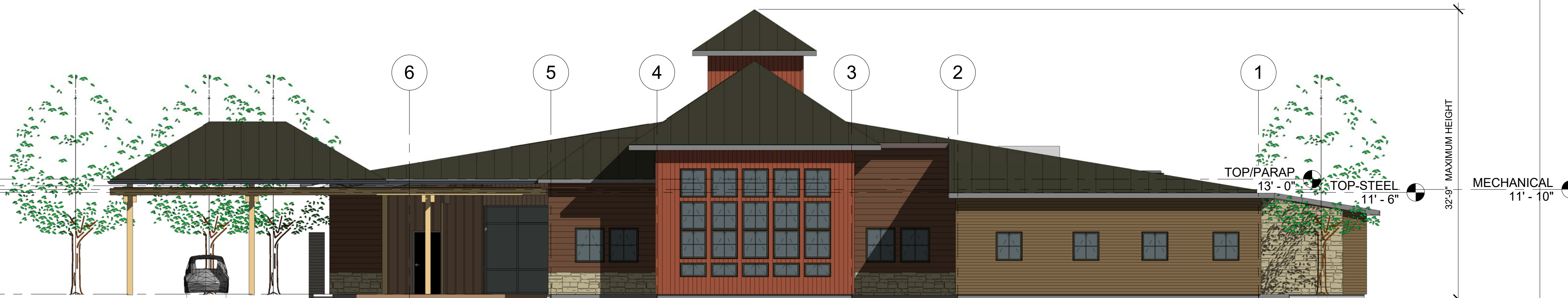
DATE	REVISION

**A1.1**  
 1/8" = 1'-0"  
 07/20/17



**2 SOUTH ELEVATION**  
1/8" = 1'-0"

**EXTERIOR FINISH NOTES:**  
 ROOFING- STANDING SEAM PRE-FINISHED METAL  
 SIDING- CEMENT BOARD CLAPBOARDS IN 6" AND 8" EXPOSURE  
 VERTICAL METAL SIDING ON THE CONFERENCE CENTER AND CUPOLA  
 NATURAL STONE VENEER IN LIMITED AREAS TO 32" HEIGHT  
 WINDOWS- PREFINISHED FIBERGLASS  
 ENTRY GLASS- ALUMINUM STOREFRONT  
 SOLAR PV PANELS ARE BEING CONSIDERED FOR THE SOUTH FACING ROOF  
 WOOD WRAPPED STEEL STRUCTURE FOR THE ENTRY CANOPY



**1 EAST ELEVATION**  
1/8" = 1'-0"

review issue: **DECEMBER 1, 2017**

Z:\2017\14\Revit\Layout\21.rvt

11/30/2017 4:23:52 PM



**BRAD RABINOWITZ ARCHITECT**  
 200 MAIN STREET BURLINGTON, VERMONT 05401  
 802 658 0430 T 802 863 6876 F  
 www.bradrabinowitzarchitect.com

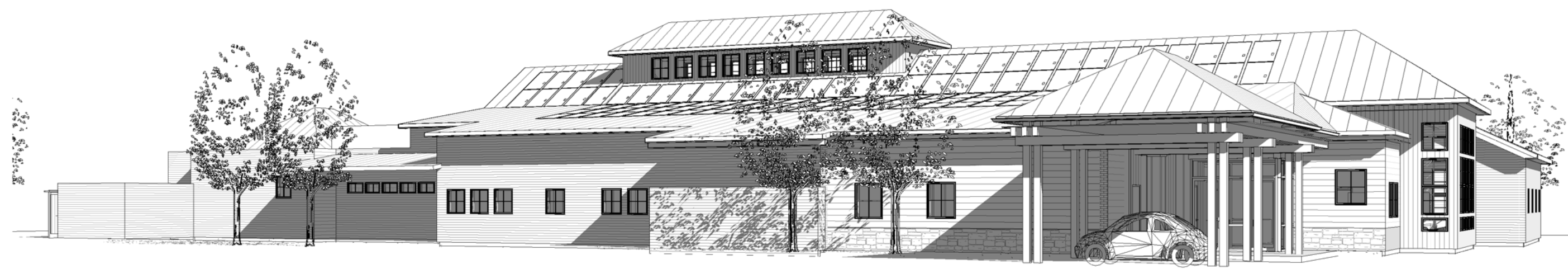
Design:



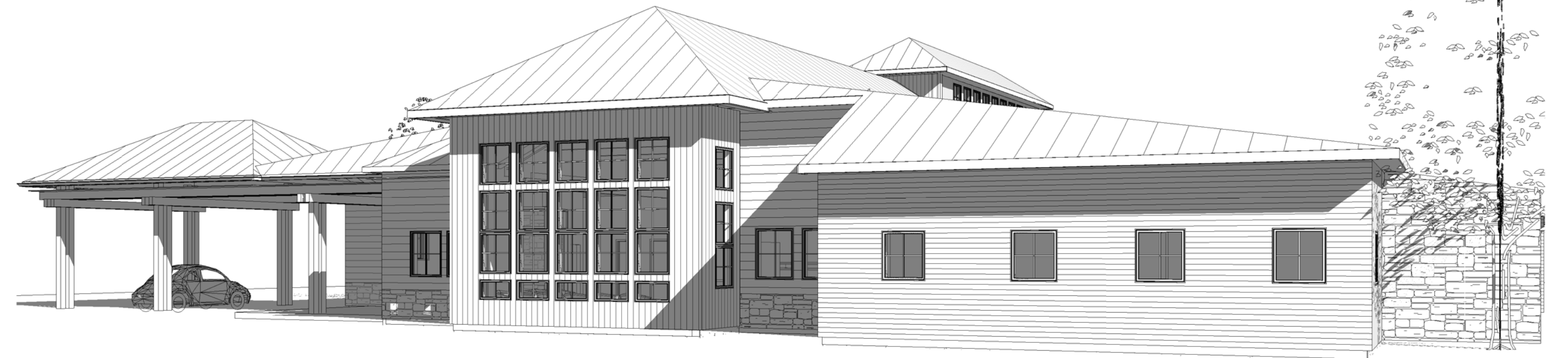
DRAWING TITLE:  
**EXTERIOR VIEWS-**

DATE	REVISION

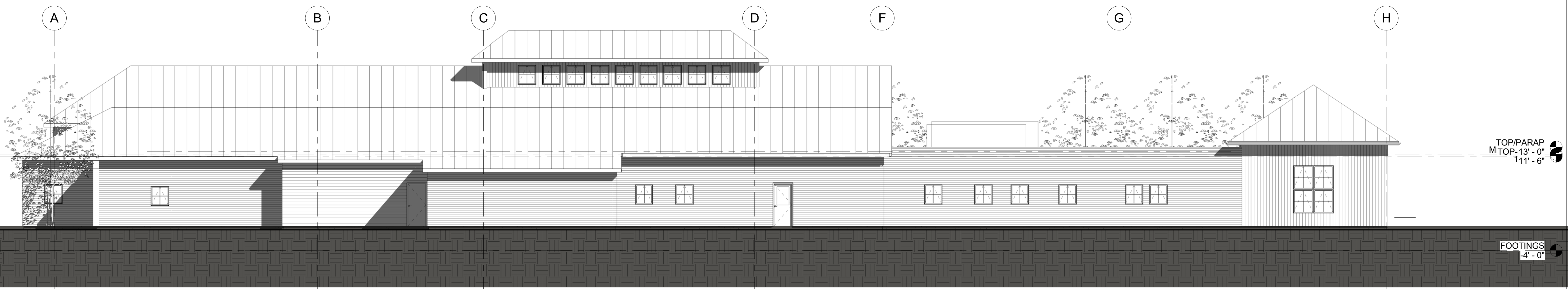
**A2.1**  
 1/8" = 1'-0"  
 08/16/17



3 S-View-1



4 NE-View-1



2 NORTH ELEVATION  
1/8" = 1'-0"

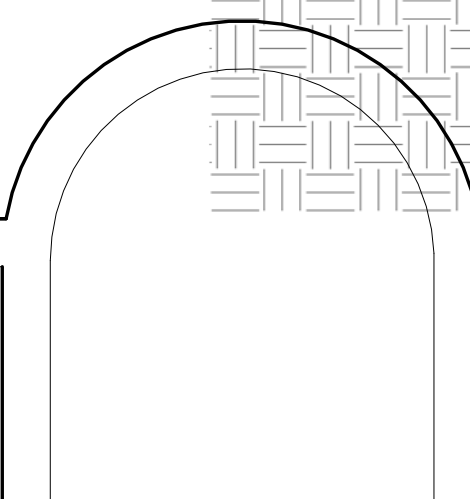
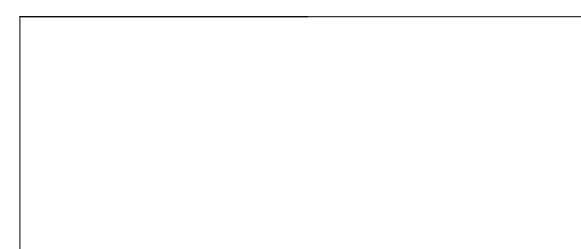


1 WEST ELEVATION  
1/8" = 1'-0"

review issue: DECEMBER 1, 2017

Z:\2017\14\Revit\Layout-2.rvt

11/30/2017 4:25:16 PM



BRAD RABINOWITZ ARCHITECT  
200 MAIN STREET BURLINGTON, VERMONT 05401  
802 658 0430 T 802 863 6876 F  
www.bradrabinowitzarchitect.com

Design:

**BEVS** EMERGENCY & SPECIALTY HOSPITAL  
MARSHALL AVENUE WILLISTON, VERMONT

DRAWING TITLE:  
**EXTERIOR VIEWS**

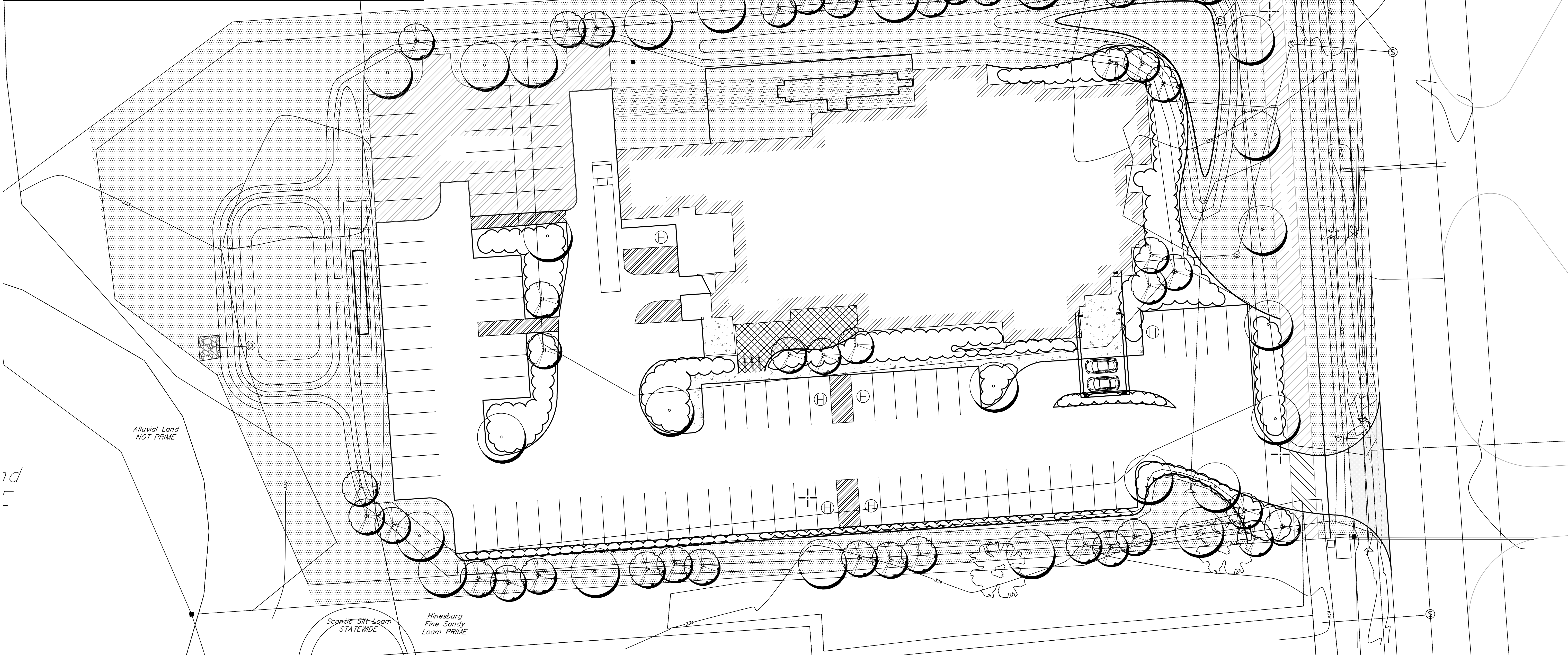
DATE	REVISION

**A2.2**  
1/8" = 1'-0"  
09/28/17

**TYPICAL PLANTING SCHEDULE**

KEY	SYM.	BOTANICAL NAME	COMMON NAME	SIZE & REMARKS
<b>SHADE/STREET TREE</b>				
○		<i>Plantanus x acerifolia</i> 'Bloodgood'	Bloodgood London Plane Tree	3.5" cal. min.
<b>ORNAMENTAL TREE</b>				
○		<i>Betula x platyphylla</i> 'Heritage'	Heritage River Birch	2' cal. min. /mult-stem
<b>EVERGREEN TREE</b>				
○		<i>Thuja occidentalis</i> 'Degroot's Spire'	Degroot's Spire Arborvitae	8' hgt.
○		<i>Pinus flexilis</i> 'Vanderwolf's Pyramid'	Vanderwolf Pine	5' hgt.
<b>EVERGREEN SHRUB</b>				
		<i>Taxus x media</i> 'wardii'	Wardii Spreading Yew	
		<i>Buxus microphylla</i> v. <i>koreana</i> 'Wintergreen'	Wintergreen Boxwood	#5
		<i>Ilex crenata</i> 'Sky Pencil'	Sky Pencil Holly	#5
<b>DECIDUOUS SHRUB</b>				
		<i>Perovskia atriplicifolia</i> 'Little Spire'	Little Spire Russian Sage	
<b>ORNAMENTAL GRASSES</b>				
		<i>Miscanthus sinensis</i> 'Yacu Jima'	Yacu Jima Maiden Grass	1 gal. @ 18" o.c.
		<i>Equisetum hyemale</i>	Horsetail	3 gal. @ 24" o.c.
<b>PERENNIAL / GROUNDCOVER</b>				
		<i>Vinca Minor</i>	Myrtle	4" Pot @ 12" o.c.
<b>TURF /LAWN</b>				
		Fescue/Bluegrass Mix		

Hinesburg Fine  
Sandy Loam  
PRIME



**BRAD RABINOWITZ ARCHITECT**  
 200 MAIN STREET, BURLINGTON, VERMONT 05401  
 802.658.0430 T 802.663.8876 F  
 www.bradrabinowitzarchitect.com

Design:

Z:\2017\14\DWG\Title Block Revised\24X36\EVS-BE\SL.ogo-1279945.png

**EMERGENCY & SPECIALTY HOSPITAL**  
 MARSHALL AVENUE  
 WILLISTON, VERMONT

DRAWING TITLE:  
**Design Development**

DATE	REVISION

**L.1**