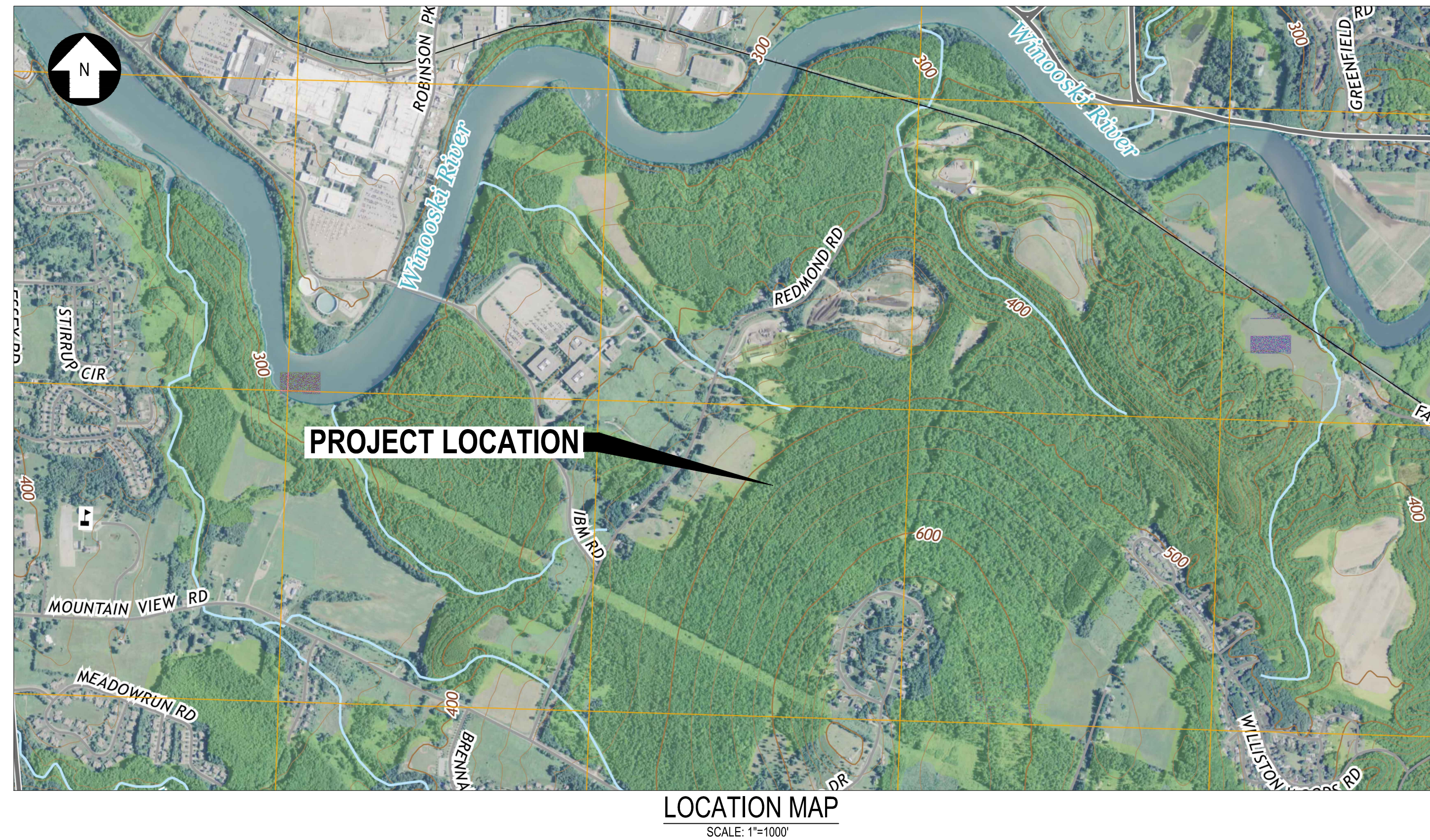
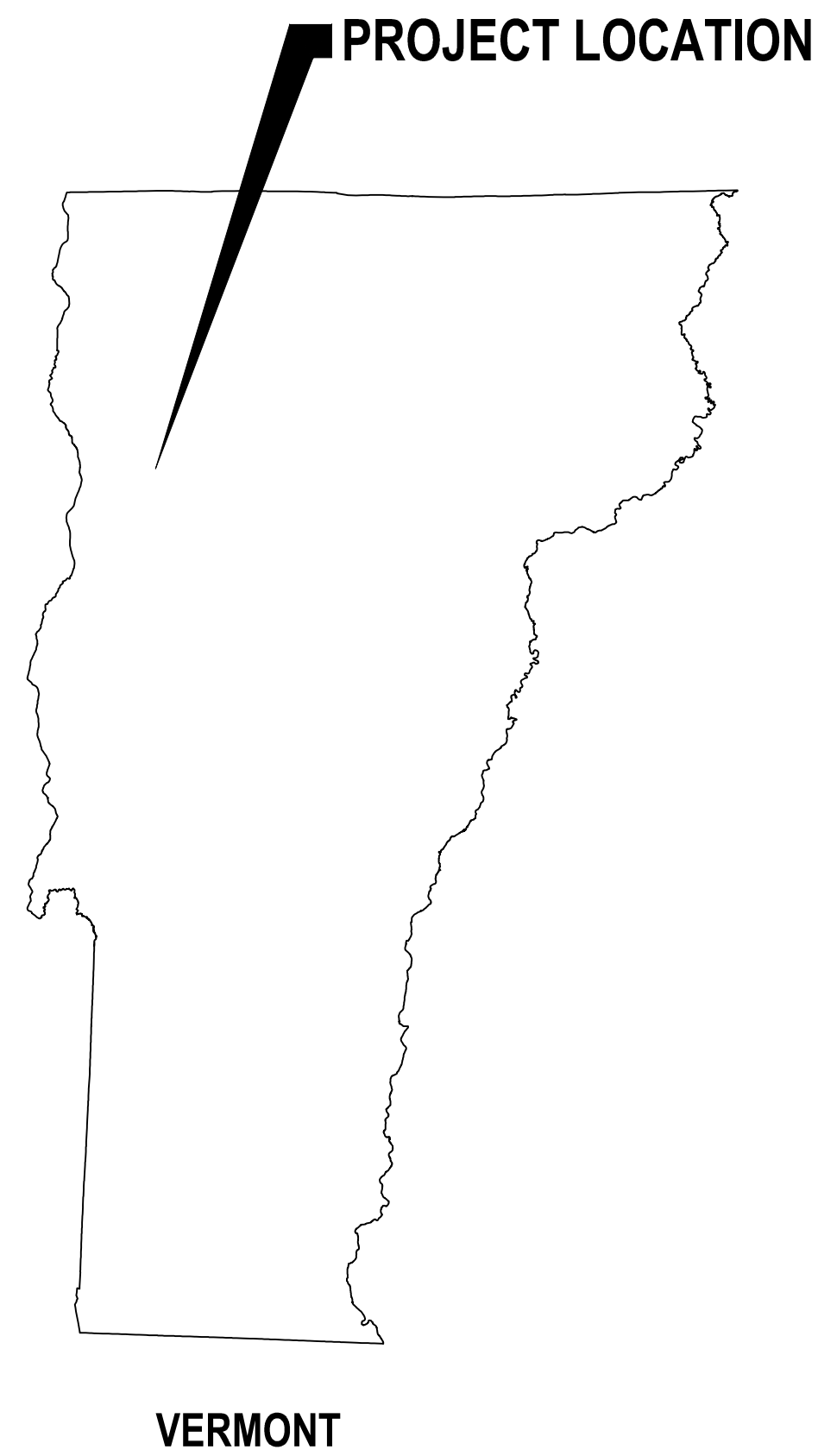


# REDMOND ROAD STORAGE FACILITY

TOWN OF WILLISTON  
CHITTENDEN COUNTY  
VERMONT



## DRAWING INDEX

- C-0 COVER SHEET / LOCATION MAP / DWG INDEX
- C-1 SPECIFICATIONS & LEGEND
- C-2 EXISTING CONDITIONS & GRUBBING PLAN
- 1 C-3 GRADING & DRAINAGE PLAN
- C-4 ROADWAY PLAN & PROFILES
- C-5 EROSION PREVENTION & SEDIMENT CONTROL PRECONSTRUCTION PLAN
- C-6 EROSION PREVENTION & SEDIMENT CONTROL CONSTRUCTION PLAN
- C-7 EROSION PREVENTION & SEDIMENT CONTROL STABILIZATION PLAN
- C-8 SECTIONS & DETAILS I
- C-9 SECTIONS & DETAILS II
- C-10 SECTIONS & DETAILS III
- C-11 EROSION CONTROL DETAILS I
- C-12 EROSION CONTROL DETAILS II
- 1 C-13 YARD PLAN
- C-14 EXTERIOR LIGHTING DETAILS
- 1 C-15 YARD ELEVATION

APPLICANT:



**VERMONT ELECTRIC POWER COMPANY**

366 PINNACLE RIDGE ROAD  
RUTLAND, VT 05701

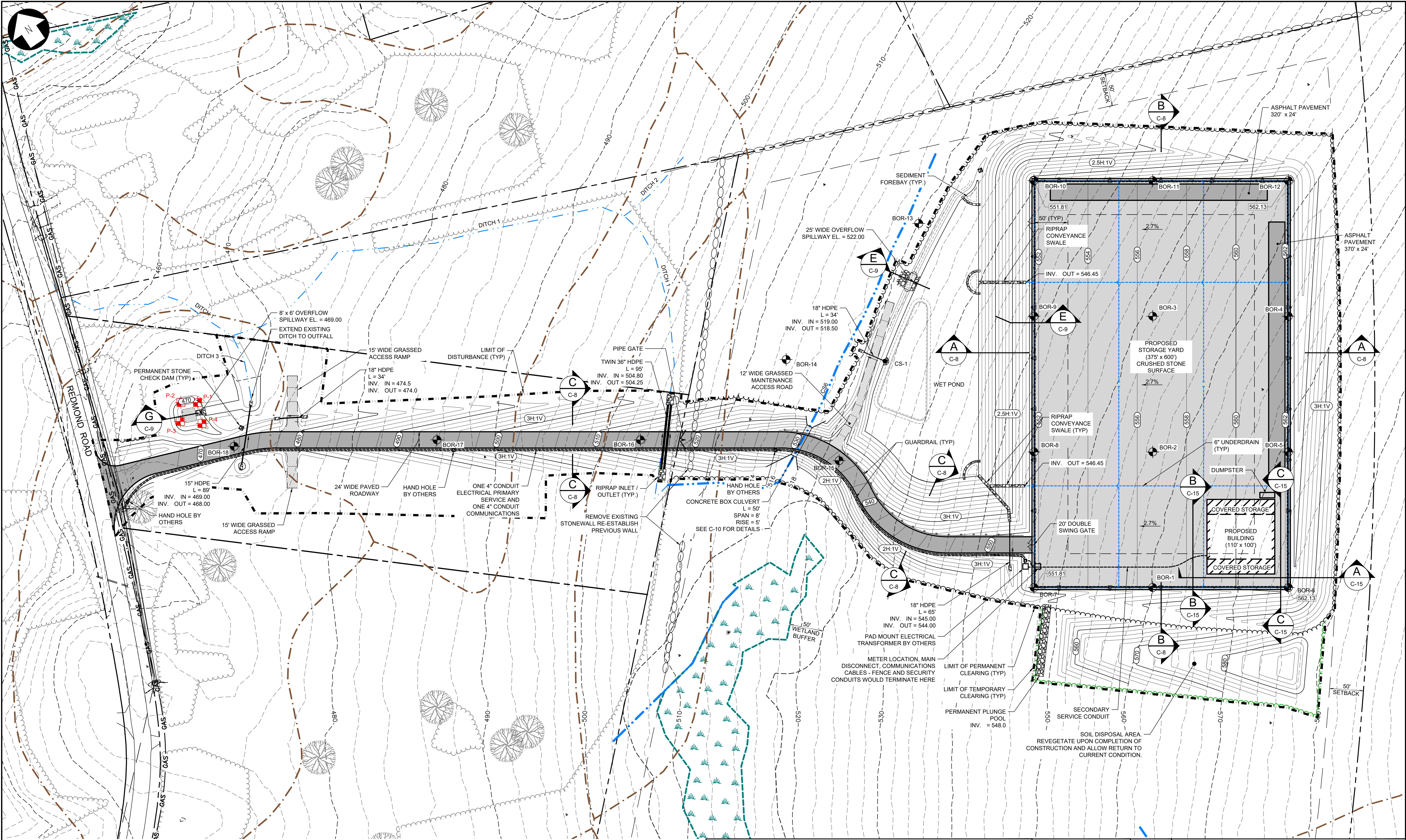
PREPARED BY:



249 WESTERN AVENUE  
AUGUSTA, ME 04330

ISSUE FOR PERMIT  
MAY 31, 2017

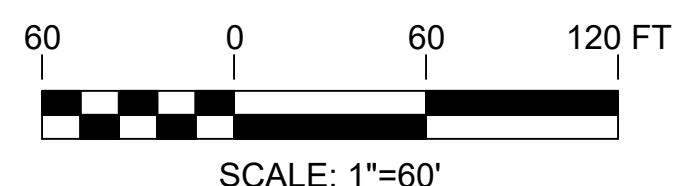
REV	DESCRIPTION	DATE	DES	CHK	APP
1	ISSUED FOR PERMIT - REVISED BUILDING	05/31/17	CMW	RAY	RAY
0	ISSUED FOR CONSTRUCTION	11/27/17	CMW	PMM	RAY



**NOTE:**  
THIS DRAWING SHOWS THE GENERAL ARRANGEMENT, SIZE, LOCATION AND COLORS OF THE REVISED STORAGE BUILDING. THE CONSTRUCTION DETAILS FOR THE STORAGE BUILDING WILL BE PROVIDED BY OTHERS.

**NOTE**  
SEE EROSION PREVENTION & SEDIMENT CONTROL STABILIZATION PLAN FOR LIMITS OF RIPRAP AND PERMANENT STABILIZATION.

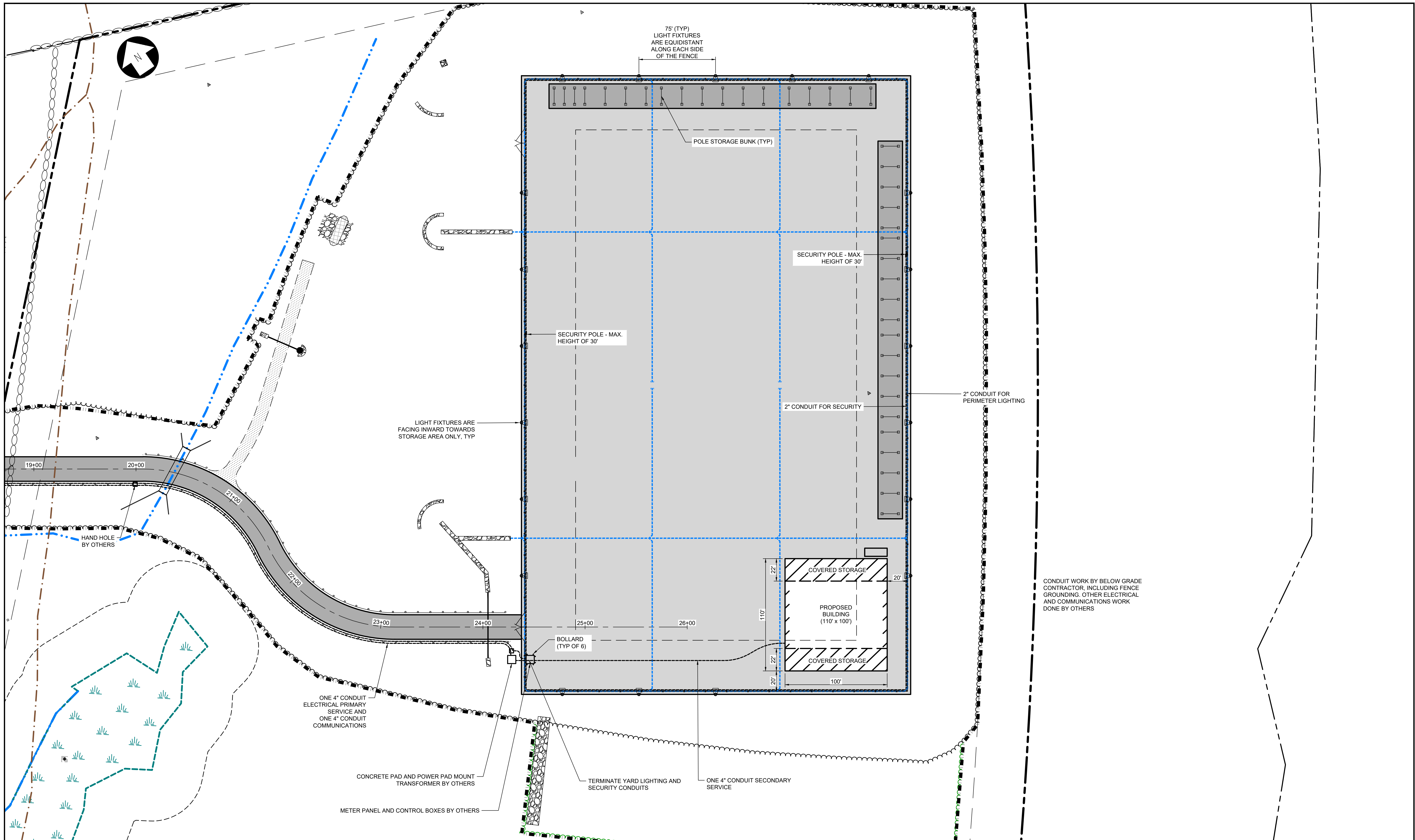
**ISSUE FOR PERMIT**  
NOT FOR CONSTRUCTION



<b>TRC</b>		249 WESTERN AVENUE AUGUSTA, ME 04330		PROJECT NO: 239919		
REV	DESCRIPTION	DATE	DES	CHK	APP	
1	ISSUED FOR PERMIT - REVISED BUILDING	05/31/18	CMW	RAY	RAY	
0	ISSUED FOR CONSTRUCTION	02/28/17	CMW	PMM	RAY	

CMW DESIGNED	<b>GRADING &amp; DRAINAGE PLAN</b> <b>VELCO</b> <b>REDMOND ROAD STORAGE FACILITY</b>	<b>WILLISTON</b>	<b>VT</b>
CMW DRAWN			
PMM CHECKED			
RAY APPROVED			
REVIEW 1 REVIEW 2			

10/28/15 DATE AS NOTED SCALE		C-3	REV. 0
---------------------------------------	--	-----	-----------



**NOTE:**  
 THIS DRAWING SHOWS THE GENERAL ARRANGEMENT, SIZE, LOCATION AND COLORS OF THE REVISED STORAGE BUILDING. THE CONSTRUCTION DETAILS FOR THE STORAGE BUILDING WILL BE PROVIDED BY OTHERS.

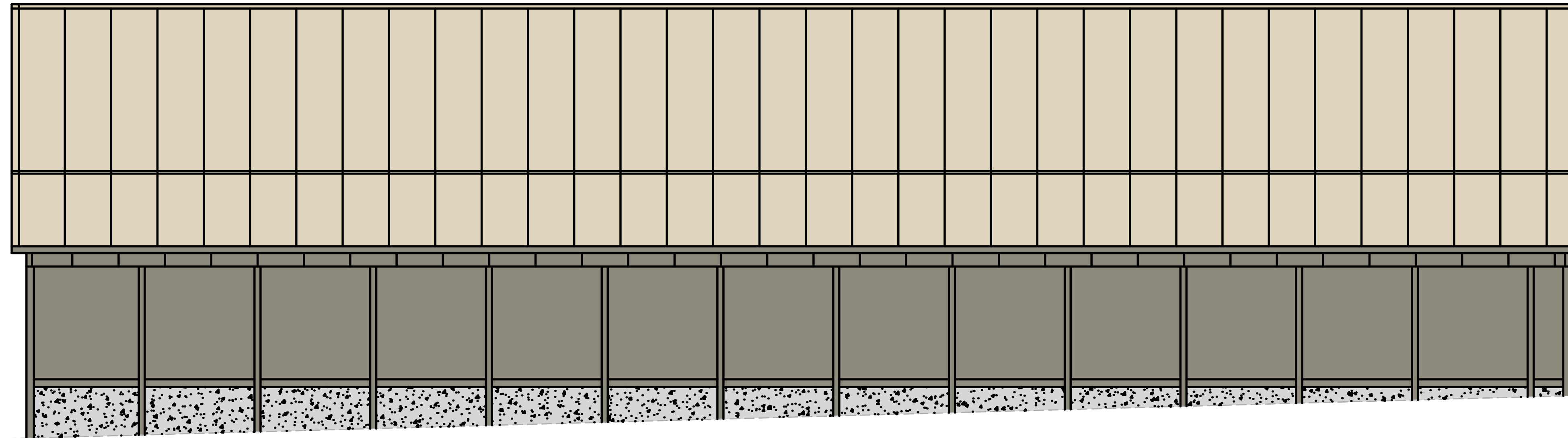
**ISSUE FOR PERMIT**  
 NOT FOR CONSTRUCTION

		249 WESTERN AVENUE AUGUSTA, ME 04330		PROJECT NO: 239919		
REV	DESCRIPTION	DATE	DES	CHK	APP	
2	ISSUED FOR PERMIT - REVISED BUILDING	05/31/18	CMW	RAY	RAY	
A	ISSUED FOR CONSTRUCTION	03/24/17	CMW	PMM	RAY	
0	ISSUED FOR CONSTRUCTION	02/28/17	CMW	PMM	RAY	

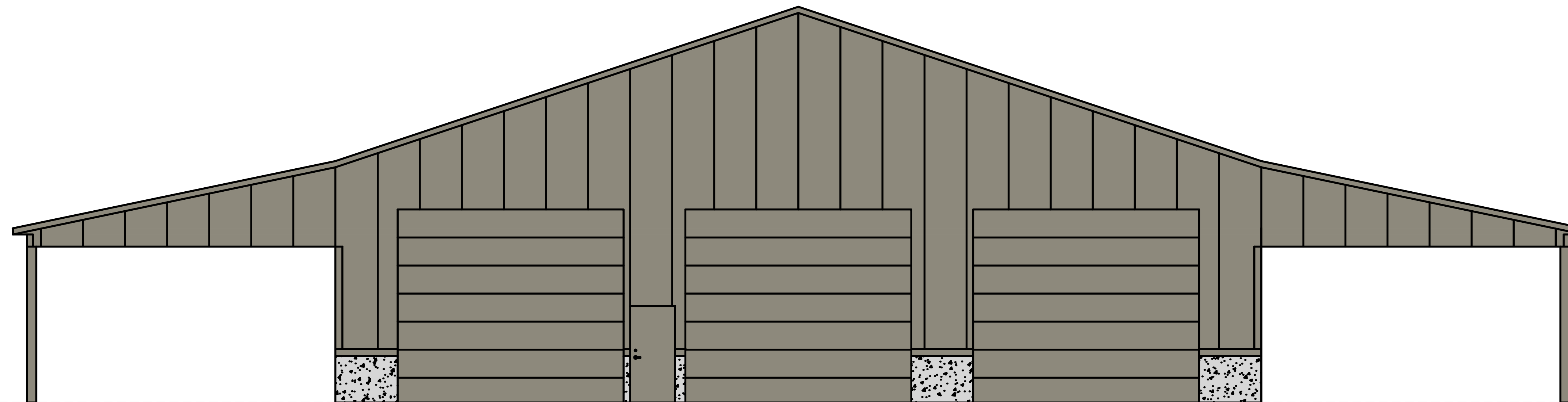
CMW DESIGNED	YARD PLAN	
CMW DRAWN	VELCO	
PMM CHECKED	REDMOND ROAD STORAGE FACILITY	
RAY APPROVED	WILLISTON	VT
REVIEW 1	10/28/15 DATE	
REVIEW 2	AS NOTED SCALE	

C-13

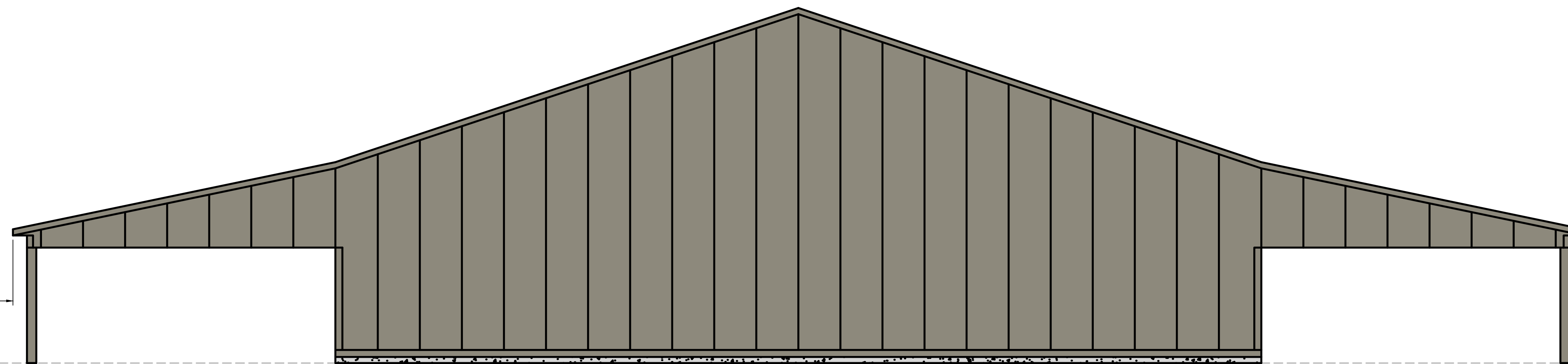
REV. 2



**SOUTH ELEVATION A-A**  
N.T.S.



**WEST ELEVATION B-B**  
N.T.S.



**EAST ELEVATION C-C**  
N.T.S.

**NOTE:**  
THIS DRAWING SHOWS THE GENERAL ARRANGEMENT, SIZE, LOCATION AND COLORS OF THE REVISED STORAGE BUILDING. THE CONSTRUCTION DETAILS FOR THE STORAGE BUILDING WILL BE PROVIDED BY OTHERS.

**ISSUE FOR PERMIT**  
NOT FOR CONSTRUCTION

		249 WESTERN AVENUE AUGUSTA, ME 04330		PROJECT NO: 239919		CMW DESIGNED		YARD ELEVATION VELCO REDMOND ROAD STORAGE FACILITY		WILLISTON VT		
REV	DESCRIPTION	DATE	DES	CHK	APP	RAY CHECKED	RAY APPROVED	REVIEW 1	05/23/18 DATE		C-15	REV. 0
0	ISSUED FOR PERMIT - REVISED BUILDING	05/31/18	CMW	RAY	RAY	REVIEW 2	AS NOTED SCALE	0				