

# Bringing Vermont's Recycling Into the 21st Century

Sarah Reeves Executive Director

October 4, 2022



# Who We Are

## CHITTENDEN COUNTY, VT

**169,681**

residents

**7,333**

businesses



- Municipal District created in 1987 by our member towns and cities.
- We serve the public without profit as a motive.

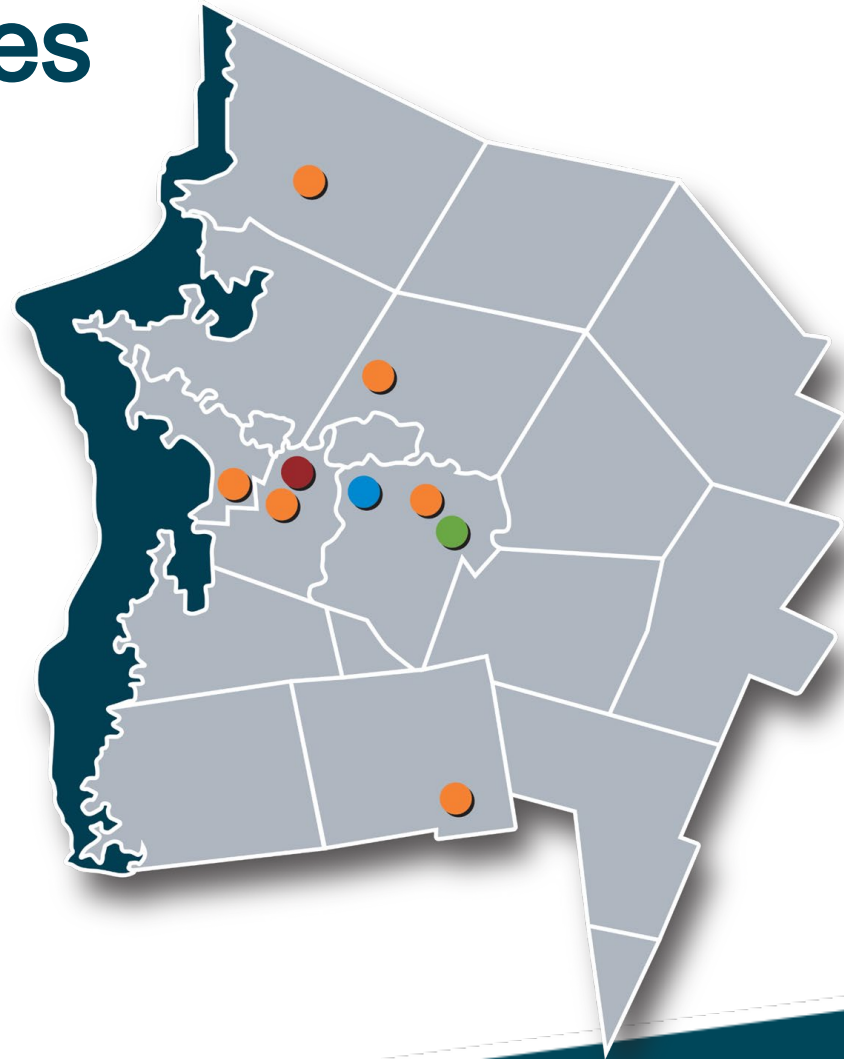
2020 data. Sources: U.S. Census and VT Dept. of Labor



Chittenden Solid Waste District

# Facilities and Services

- Environmental Depot and Rover
  - Local Color Paint
- Organics Diversion Facility
  - Green Mountain Compost
- Drop-off Centers
- Outreach and Education
- Technical & Financial Support for Members
- Public Policy
- Compliance
- Materials Recovery Facility



# What is a MRF?

- Sorts and processes “blue -bin” recyclables for end markets
- CSWD owns MRF building, property, equipment
- Only publicly owned single -stream MRF in VT



# Why We Need A New MRF



- Built in 1993
- At maximum capacity
- Cannot expand
- Single baler; no redundancy



# Why We Need A New MRF



- No flexibility
- Limits the amount Vermonters can recycle.
- Inefficient hand-sorting
- Losing valuable recyclables

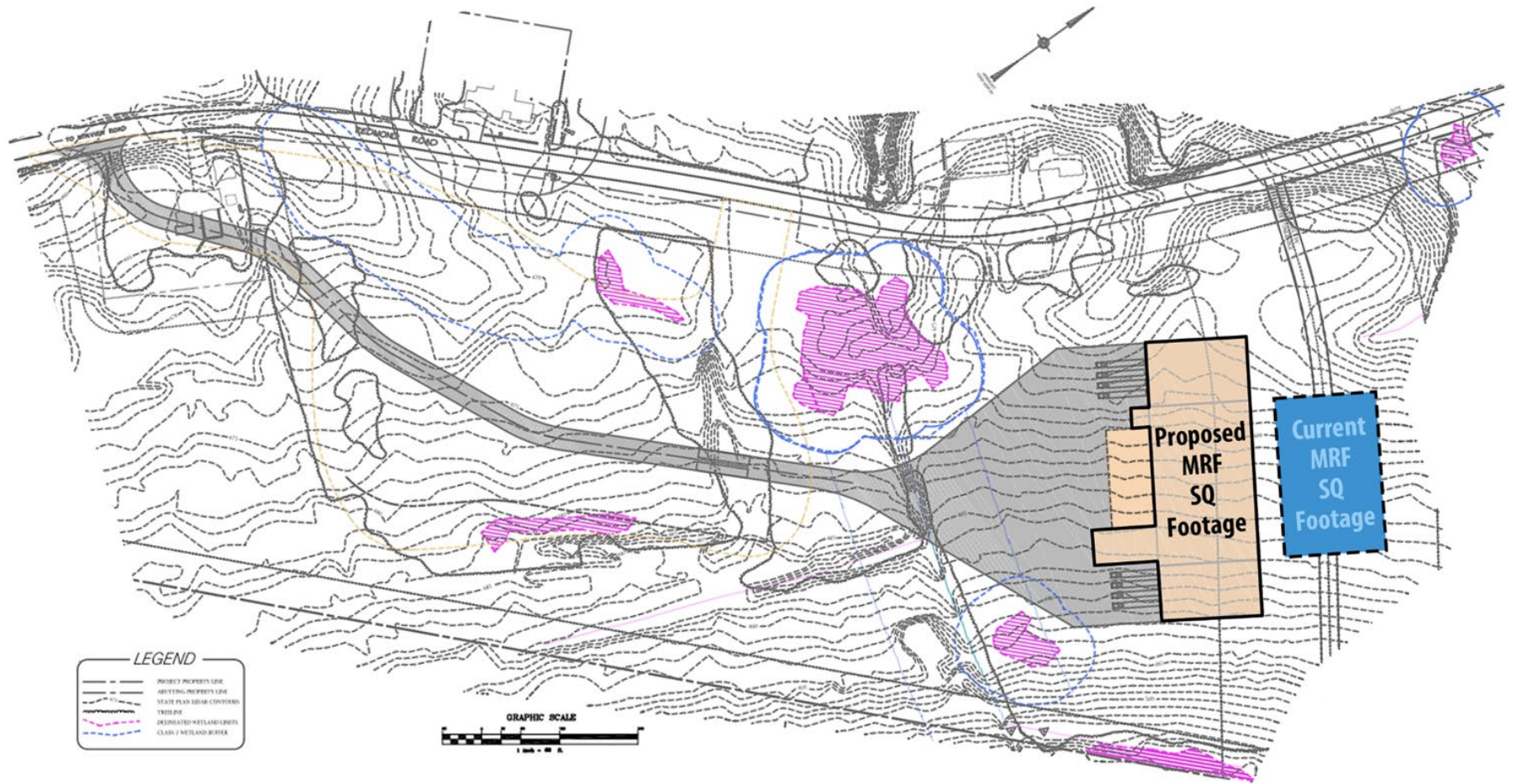


- Severely limited storage
- Reduces quality and value of recyclables
- Hampers marketing flexibility



# New MRF Conceptual Design

*Redmond Road, Williston*





# Technology Benefits

Optical sorters and eddy currents – standard technology in any 21<sup>st</sup>-century MRF.



- Essential for meeting quality standards
- Can help alleviate labor shortages.

# Capacity Benefits

More square footage = higher quality output.



More and longer conveyors enable better sorting.

Adequate bale storage

All processing is indoors

# Future-Proofing Benefits

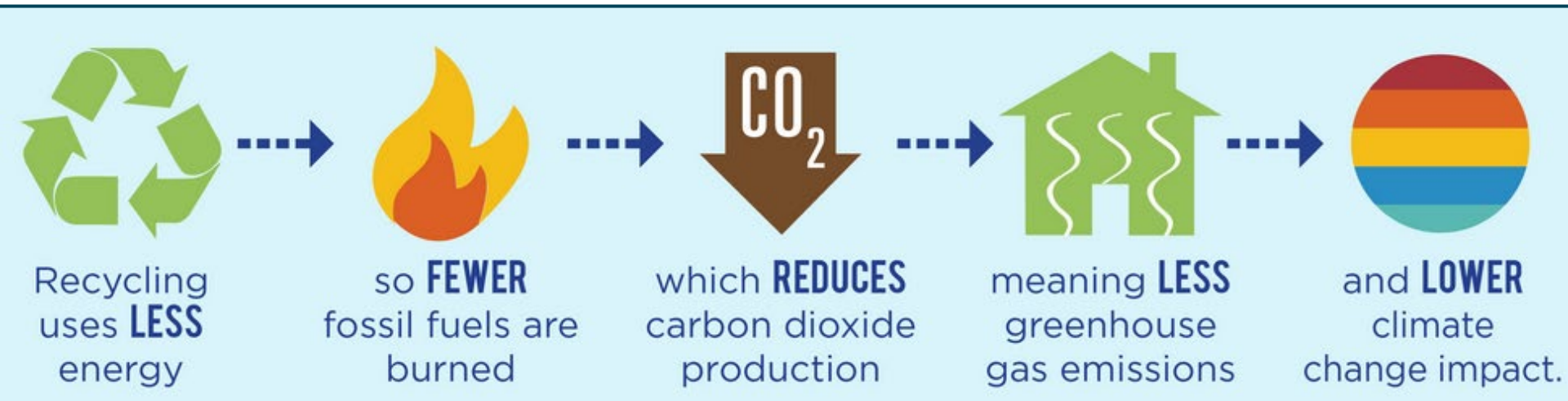


- 40% more capacity will equip us for the next 30 years.
- Ability to adapt to evolving packaging = removing more recyclables from the waste stream.



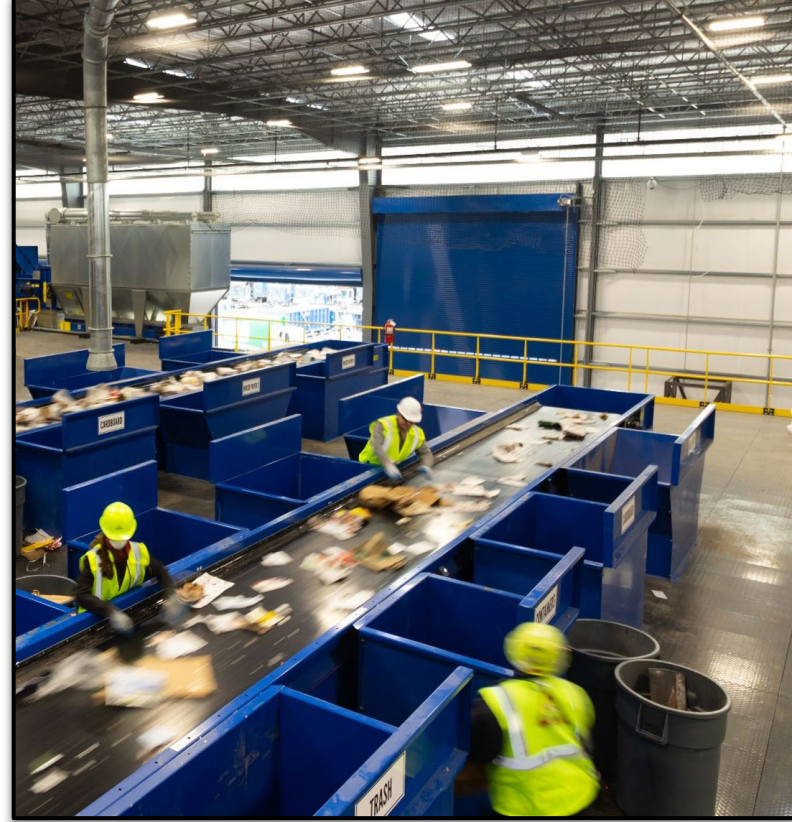
# Environmental Benefits

- Continue to preserve landfill space.
- Process up to 70,000 tons of recyclables every year:
  - Conserving natural resources: Trees, water, mined materials (ores, minerals, sand), petroleum products, etc.
  - Equivalent of removing 52,500 passenger vehicles from the road and conserving nearly 28 million gallons of gas annually.



# Benefits for Workers

- Maintain 21 Vermont jobs.
- Create higher skilled positions.
- Cleaner, brighter, better ventilated working conditions.



**New MRF**



**Current MRF**

# Funding Sources

Source of Funds	Amount
VT Municipal Bond Bank	\$16,000,000
Closed Loop Fund	\$6,000,000
CSWD contribution*	\$3,500,000
The Recycling Partnership	\$500,000
<b>TOTAL</b>	<b>\$26,000,000</b>
*Less EPA grant funding	



# How It Will Be Paid For

- CSWD will pay back the loan over 25 years through operational revenue.
- CSWD's municipally owned MRF will continue to serve the public without profit as a motive.
- CSWD will keep fees as low as possible and provide maximum recycling opportunities even when not profitable.



# How To Get Your Ballot

- CSWD is seeking voter approval during this year's November General Election to borrow \$22 million to build the new MRF.
- Options for getting the CSWD ballot:
  - Request it from [mvp.vermont.gov](https://mvp.vermont.gov) (the My Voter Page)
  - Call or visit your Town Clerk's office to pick up the CSWD ballot.
  - The CSWD ballot will be at all Chittenden County polling places on November 8, 2022.





# Questions?

For more information and to stay up to date please visit

[www.CSWD.net/mrf-bond](http://www.CSWD.net/mrf-bond)

