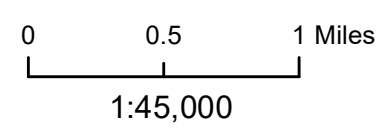
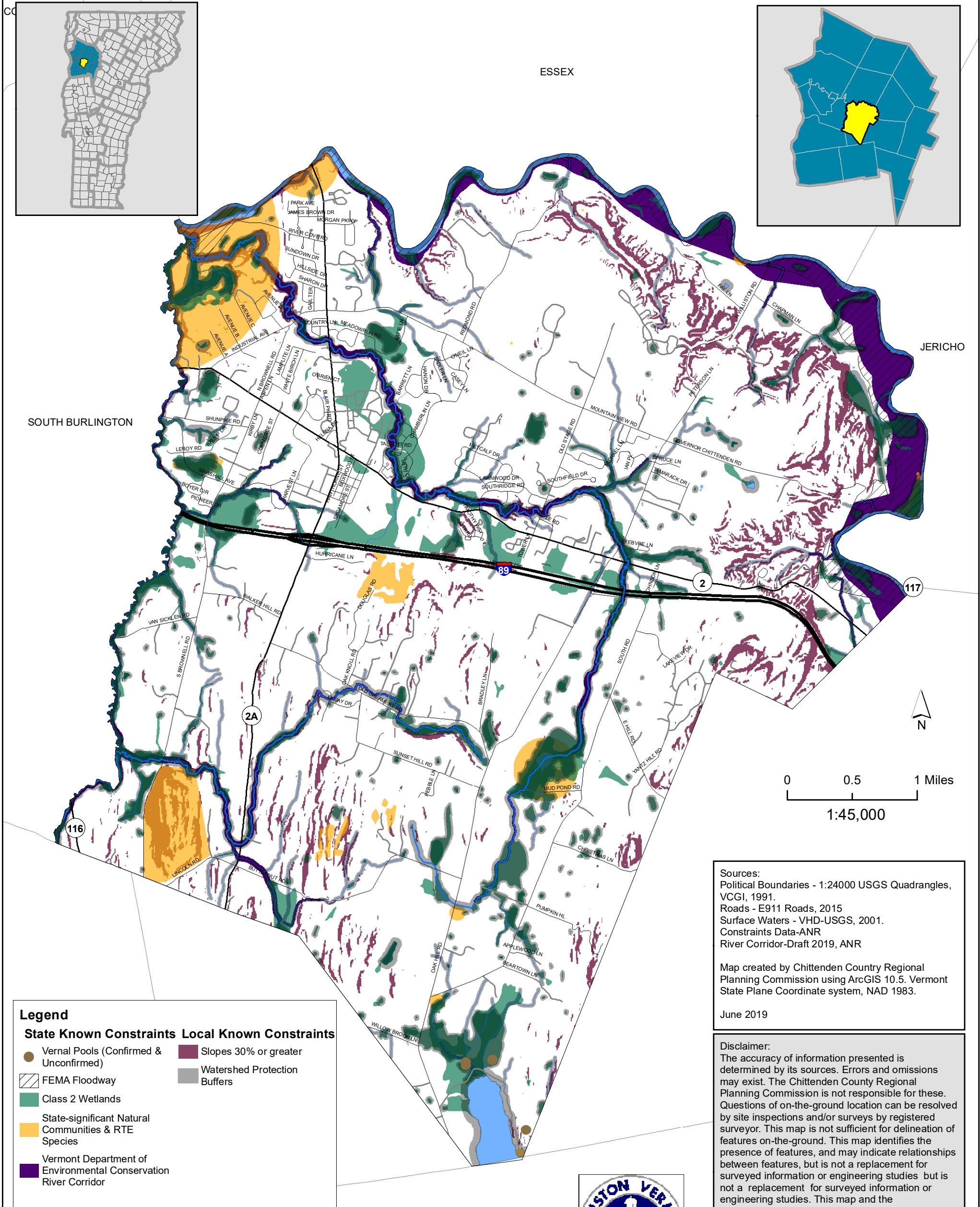
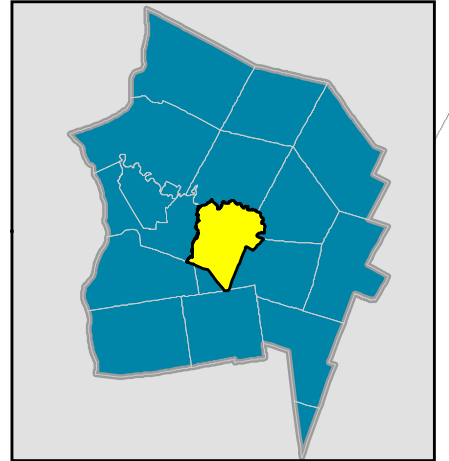
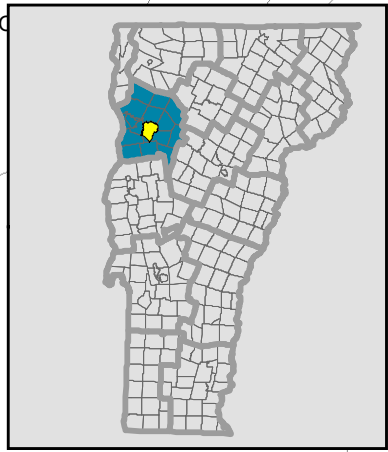


Williston 2016-2024 Comprehensive Plan

Map 23 - State and Local Known Constraints



Legend	
State Known Constraints	Local Known Constraints
Vernal Pools (Confirmed & Unconfirmed)	Slopes 30% or greater
FEMA Floodway	Watershed Protection Buffers
Class 2 Wetlands	
State-significant Natural Communities & RTE Species	
Vermont Department of Environmental Conservation River Corridor	

Sources:
 Political Boundaries - 1:24000 USGS Quadrangles, VCGI, 1991.
 Roads - E911 Roads, 2015
 Surface Waters - VHD-USGS, 2001.
 Constraints Data-ANR
 River Corridor-Draft 2019, ANR

Map created by Chittenden County Regional Planning Commission using ArcGIS 10.5. Vermont State Plane Coordinate system, NAD 1983.

June 2019

Disclaimer:
 The accuracy of information presented is determined by its sources. Errors and omissions may exist. The Chittenden County Regional Planning Commission is not responsible for these. Questions of on-the-ground location can be resolved by site inspections and/or surveys by registered surveyor. This map is not sufficient for delineation of features on-the-ground. This map identifies the presence of features, and may indicate relationships between features, but is not a replacement for surveyed information or engineering studies but is not a replacement for surveyed information or engineering studies. This map and the corresponding data is intended to be used to inform energy planning efforts by municipalities and regions. They may also be used for conceptual planning or initial site identification by those interested in developing renewable energy infrastructure. They should NOT take the place of site-specific investigation for a proposed facility and should not be used as "siting maps"

