

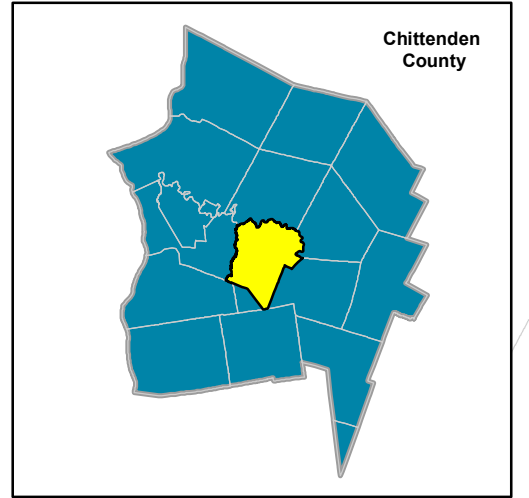
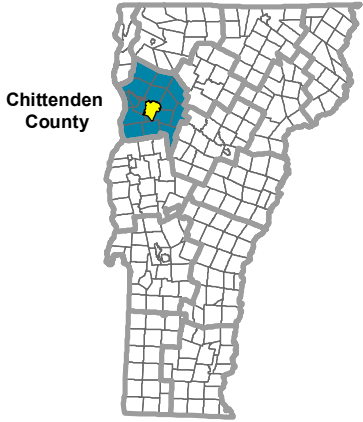
Williston 2016-2024 Comprehensive Plan

Map 15 - Topographic Constraints



1:45,000

0 0.5 1 Miles

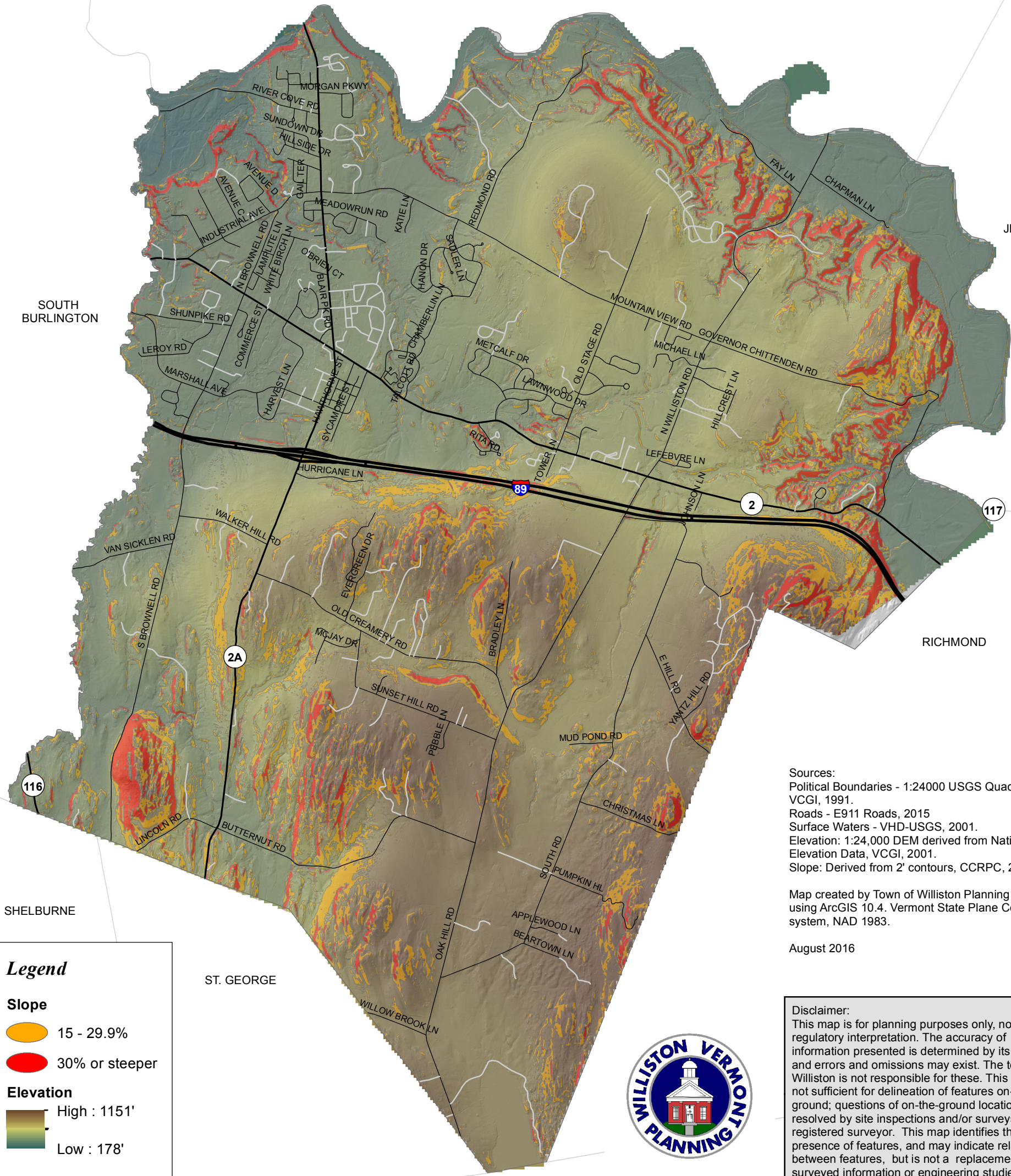


ESSEX

JERICHO

SOUTH BURLINGTON

RICHMOND



SHELBURNE

ST. GEORGE

HINESBURG

Sources:
 Political Boundaries - 1:24000 USGS Quadrangles, VCGI, 1991.
 Roads - E911 Roads, 2015
 Surface Waters - VHD-USGS, 2001.
 Elevation: 1:24,000 DEM derived from National Elevation Data, VCGI, 2001.
 Slope: Derived from 2' contours, CCRPC, 2011.

Map created by Town of Williston Planning Office using ArcGIS 10.4. Vermont State Plane Coordinate system, NAD 1983.

August 2016

Legend

Slope

- 15 - 29.9%
- 30% or steeper

Elevation

- High : 1151'
- Low : 178'



Disclaimer:
 This map is for planning purposes only, not for regulatory interpretation. The accuracy of information presented is determined by its sources, and errors and omissions may exist. The town of Williston is not responsible for these. This map is not sufficient for delineation of features on-the-ground; questions of on-the-ground location can be resolved by site inspections and/or surveys by registered surveyor. This map identifies the presence of features, and may indicate relationships between features, but is not a replacement for surveyed information or engineering studies.